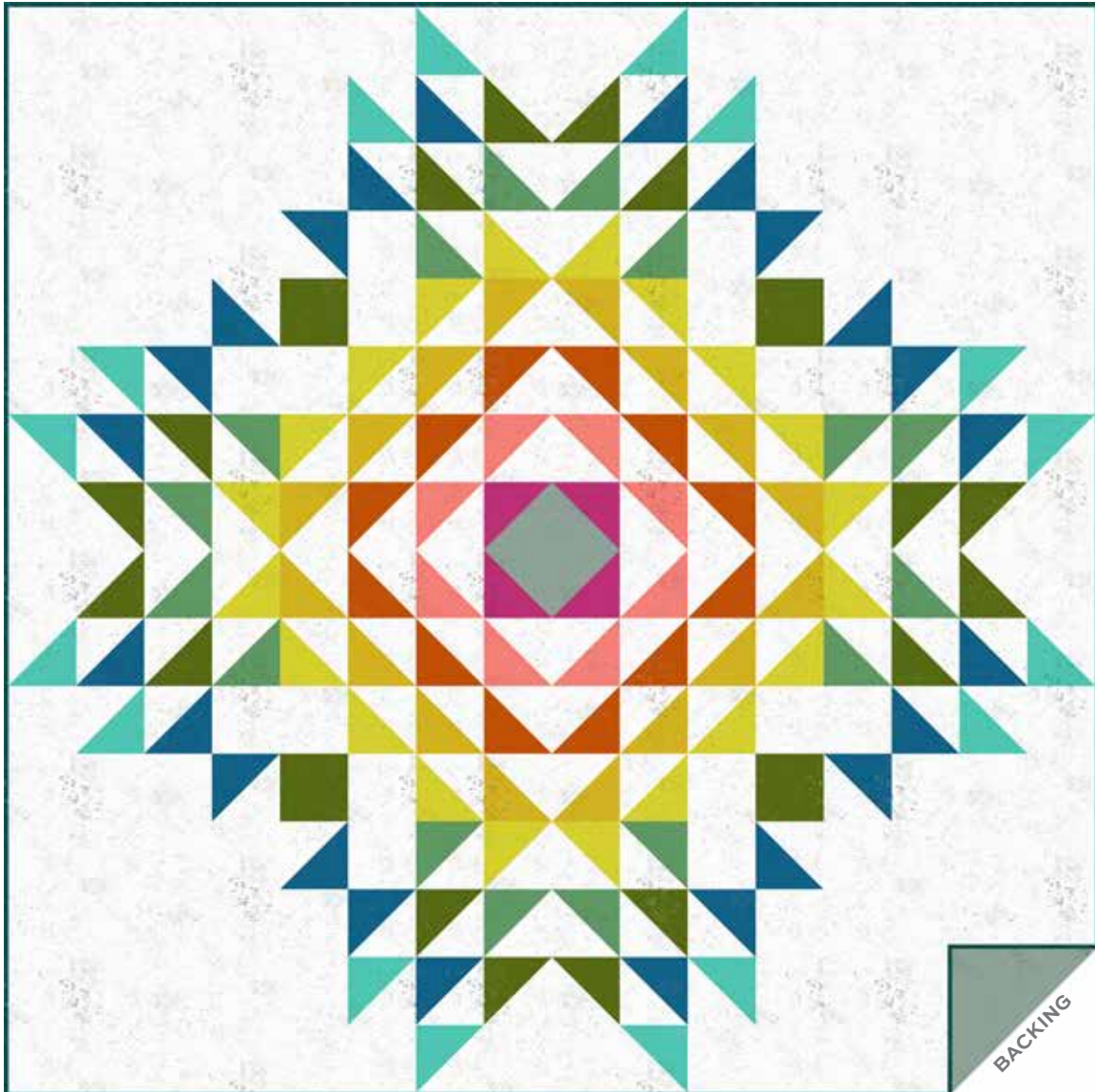


# Spectrastatic II

GIUCY GIUCE



100  
years



Canyon Road Quilt designed by: **Giucy Giuce** • Quilt Size: **64" x 64"**

Skill Level: **Beginner / Intermediate** • [andoverfabrics.com](http://andoverfabrics.com)

andover



[makower.uk](http://makower.uk)

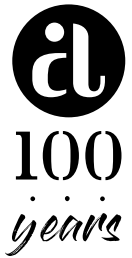
Free Pattern Download Available

1384 Broadway New York, NY 10018  
Tel. (800) 223-5678 • [andoverfabrics.com](http://andoverfabrics.com)

# Canyon Road Quilt

Introducing Andover Fabrics new collection: SPECTRASTATIC II by Andover Fabrics

Quilt designed by Giucy Giuce



Quilt finishes 64" x 64"

*The dynamic color shifts form a pleasing mandala design in this lovely wall quilt. The light background is the perfect backdrop for your quilting.*

## Cutting Directions

**Note:** Read assembly directions before cutting patches. All measurements are cut sizes and include 1/4" seam allowances. A fat 1/8 is a 9" x 20"-22" cut of fabric. A fat 1/4 is an 18" x 20"-22" cut. WOF designates the width of fabric from selvedge to selvedge (approximately 42" wide).

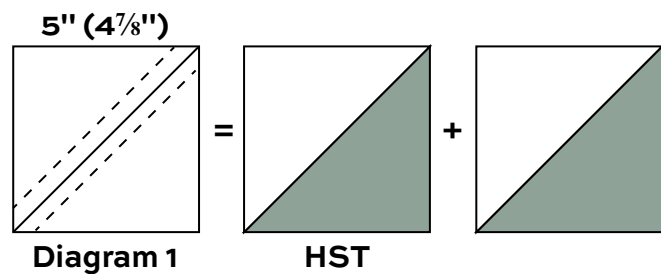
- 9248 E4** Cut (4) squares 5" (47/8") for HST (read Step 1 before cutting)
- 9248 L2** Cut (4) squares 16 1/2" x 16 1/2"  
Cut (64) squares 5" (47/8")  
Cut (56) squares 4 1/2" x 4 1/2"
- 9248 B1** Cut (12) squares 5" (47/8") for HST
- 9248 O3** Cut (6) squares 5" (47/8") for HST
- 9248 V** Cut (10) squares 5" (47/8") for HST
- 9248 G4** Cut (4) squares 4 1/2" x 4 1/2"  
Cut (8) squares 5" (47/8") for HST
- 3 Fat 1/4s** **From each:**  
Cut (8) squares 5" (47/8") for HST
- 2 Fat 1/8s** **From each:**  
Cut (2) squares 5" (47/8") for HST
- Binding** Cut (7) strips 2 1/2" x WOF for binding
- Backing** Cut (2) panels 36" x 72", pieced to fit quilt top with overlap on all sides

## Fabric Requirements

		Yardage
<b>9248 E4</b>	HST	Fat 1/8 yard
<b>9248 L2</b>	backgrd.	3 yards
<b>9248 B1</b>	HST	Fat 1/4 yard
<b>9248 O3</b>	HST	Fat 1/4 yard
<b>9248 V</b>	HST	Fat 1/4 yard
<b>9248 G4</b>	HST	Fat 1/4 yard
<b>3 Fat 1/4s</b>	HST	Fat 1/4 yard each
	9248 G3	9248 T5 9248 Y3
<b>2 Fat 1/8s</b>	HST	Fat 1/8 yard each
	*9248 C1	9248 E3
<b>9248 T4 (binding)</b>		1/2 yard
<b>*9248 C1 (backing)</b>		4 yards

## Making the Quilt

- The quilt is made with half-square triangles (HST) that finish 4" square. Cutting squares 5" allows for trimming the HST after stitching. If you wish to eliminate this trimming step, cut 4 7/8" squares for HST. Set gray and hot pink squares aside for now. Use your favorite method to make HST, or follow these directions. Draw a diagonal line on the wrong side of 64 white (9248 L2) 5" squares and 2 gray (9248 C1) squares. Place a marked white square on a bright 5" square, right sides together. Sew 1/4" seam on each side of the marked line; cut apart on the marked line (Diagram 1). Press open to make pieced HST. Trim the squares to 4 1/2" if needed. Make a total of 128 HST. Make 4 more HST for the quilt's center using the gray and hot pink (9248 E3) squares.



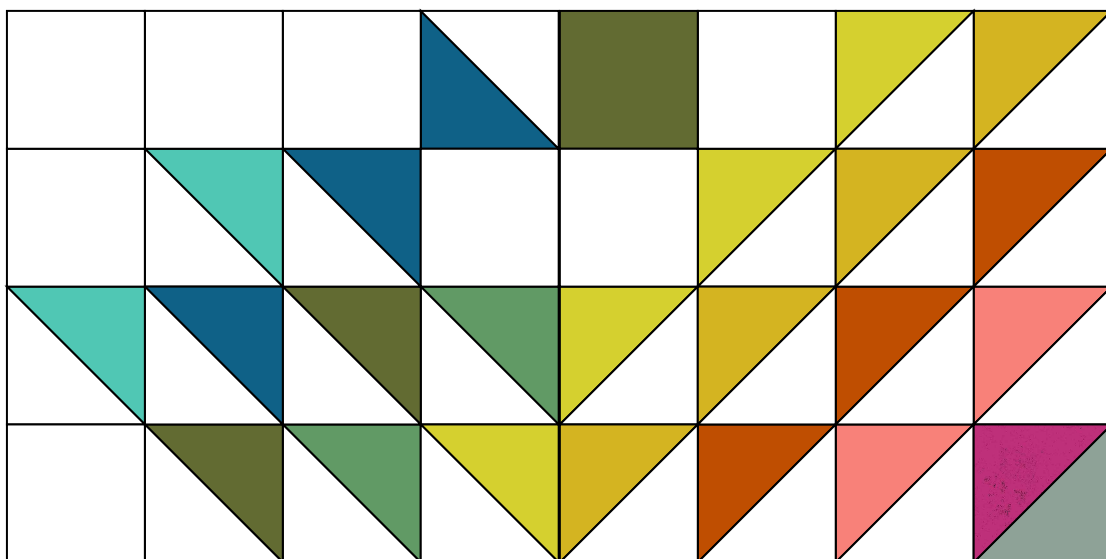
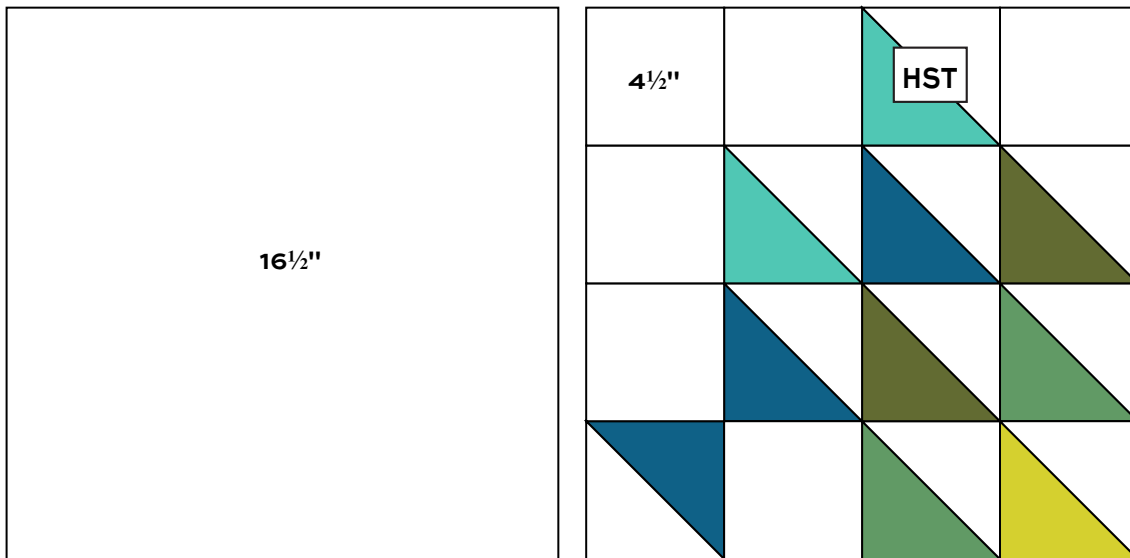
# Canyon Road Quilt

2. Referring to the Quarter Quilt Diagram, arrange the HST, white  $4\frac{1}{2}$ " squares, and an olive green (9248 G4)  $4\frac{1}{2}$ " square into rows as shown. Turn the HST to match the design. Join the patches into horizontal rows to make larger units. Join the top unit with the white  $16\frac{1}{2}$ " square to make the top half of the quarter quilt. Join the top unit to the bottom unit.

3. Make 4 quarter quilts all alike. Finally, join the quarter quilts to make the quilt, rotating each unit 90 degrees to make the design shown in the quilt photograph.

## Finishing the Quilt

4. Layer the quilt with batting and backing and baste. Quilt in the ditch around block patches. Quilt the background white patches as you wish. Bind to finish the quilt.



Quarter Quilt Diagram - Make 4

# Spectrastatic II

GIUCY GIUCE



100  
years



9248 N2



9248 NP



9248 E3\*



9248 E4\*



9248 O4



9248 O3\*



9248 OL



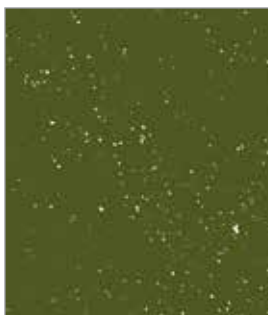
9248 Y2



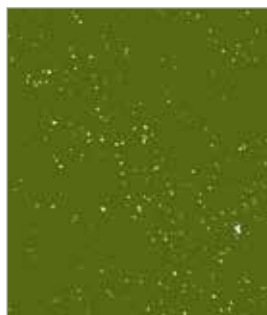
9248 Y3\*



9248 V\*



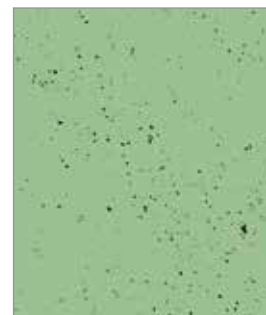
9248 G4\*



9248 G5



9248 G3\*



9248 G6



9248 T5\*



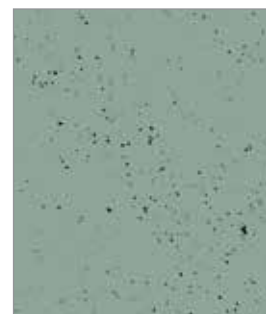
9248 T4\*



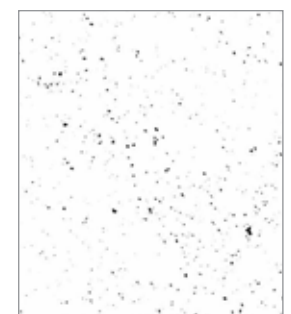
9248 B2



9248 B1\*



9248 C1\*



9248 L2\*

\*Indicates fabrics used in quilt pattern. Fabrics shown are 100% of actual size.

andover



[makower.uk](http://makower.uk)

Free Pattern Download Available

1384 Broadway New York, NY 10018  
Tel. (800) 223-5678 • [andoverfabrics.com](http://andoverfabrics.com)